

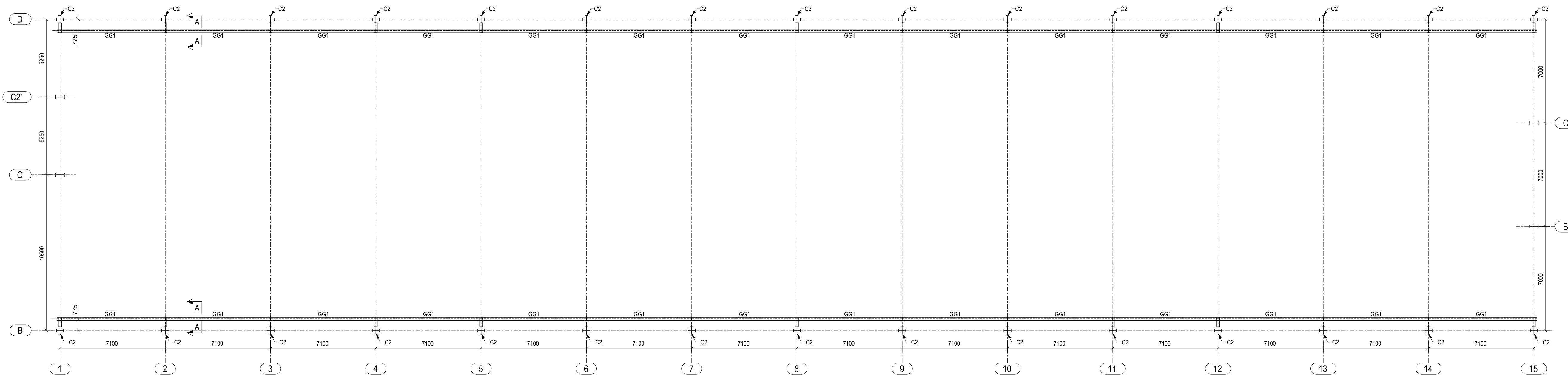
THIS DRAWING & DESIGN IS THE SOLE PROPERTY OF VMS & SHALL NOT BE COPIED, TRACED OR REPRODUCED BY ANY MEANS WITHOUT PRIOR WRITTEN CONSENT OF THE FIRM.

GENERAL NOTES :

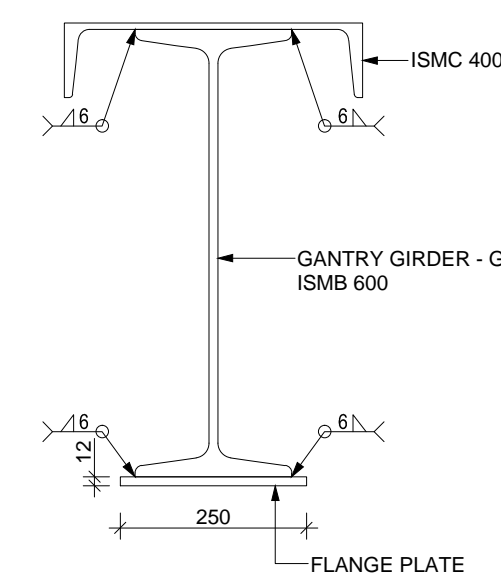
1. ALL THE DIMENSIONS ARE UNFINISHED DIMENSIONS.
2. ALL DIMENSIONS ARE IN MM AND LEVELS ARE IN MT., UNLESS OTHERWISE MENTIONED.
3. ALL THE DIMENSIONS SHALL BE READ & NOT TO BE MEASURED.
4. ALL WELD TO BE 6mm FULL FLET WELD, UNLESS SPECIFIED OTHERWISE.
5. ALL BOLTS ARE TO BE 8.8 GRADE, UNLESS OTHERWISE SPECIFIED.
6. FOR ALL OTHER NOTES REFER DRG. NO.: GEN.S.02

IMPORTANT NOTE :

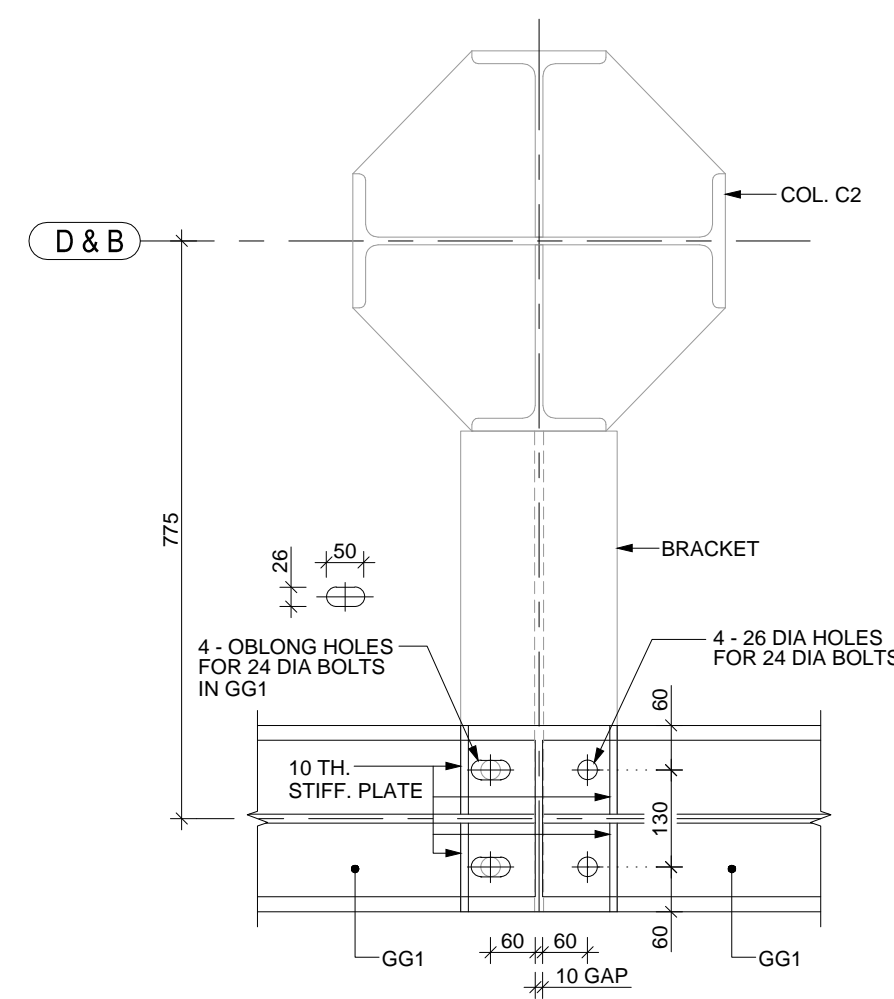
1. ± 0.000 LVL. = RL +53.50 MT
2. THE CONTRACTOR SHALL SUBMIT THE SHOP DRAWINGS FOR APPROVAL PRIOR TO FABRICATION.



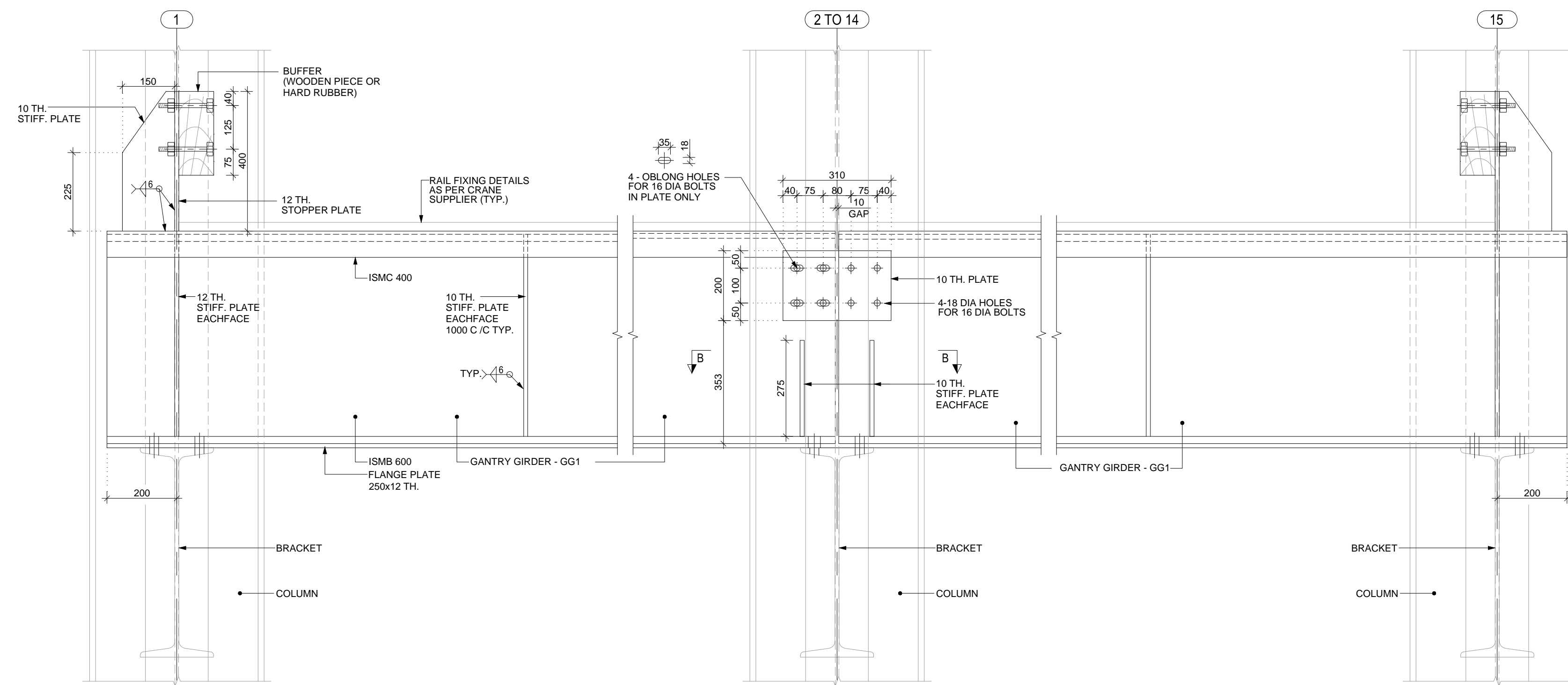
LAYOUT FOR GANTRY GIRDER



A SECTION (FOR GG1)
SCALE 1:10



B SECTION - AS DRAWN ON GRID - D
B SECTION - AS DRAWN ON GRID - B (BUTT MIRROR IMAGE)



DETAILS OF GANTRY GIRDER FOR (40 T CAPACITY)

NO.	DATE	DESCRIPTION	REVISED BY	DRAWN BY	CHECKED BY
-----	------	-------------	------------	----------	------------

REVISION HISTORY

FOR CONSTRUCTION

REFERENCE DRAWINGS :

- 01. ARCHITECTURAL : A.1.101 TO A.1.107, A.1.201 TO A.1.205 ONWARD .
- 02. STRUCTURAL : SS.1.01 TO SS.1.04 ONWARD .
- 03.HVAC :
- 04. ELECTRICAL :
- 05. UTILITIES :

LAYOUT & DETAILS FOR GANTRY GIRDER (40 T CAPACITY)

LABORATORY BUILDING

XI-PLAN PROJECT AT BHAT, GANDHINAGAR

INSTITUTE FOR PLASMA RESEARCH

PROJECT NO. 1311	SCALE : 1:150 1:10	DRAWN : REETA PROJECT ENGINEER : HRUSHIKESH CHECKED: NEHA BANKER APPROVED : RNS
----------------------------	--------------------------	------------------------------------------------------------------------------------------

ASSOCIATE H.V.A.C. CONSULTANTS :
Mihir N. Patel
26-B, TRUST NAGAR
NEW SHARDAMANDIR ROAD, AHMEDABAD- 380 007

ASSOCIATE FIRE SAFETY CONSULTANTS :
Prachinoff Engineers Pvt Ltd.
F-201 SHRINAND NAGAR PART 2
VEJALPUR AHMEDABAD- 380 051

ASSOCIATE ELECTRICAL CONSULTANTS :
Kirit Patel & Associate
A-91, AKASH TOWER, JUDGES BUNGLOW ROAD,
BODAKDEV, AHMEDABAD- 380 054.
email: kiritpatel_3333@rediffmail.com

vms VMS ENGINEERING & DESIGN SERVICES (P) LTD.
CHITRAKOOT FLATS, BEHIND TIMES OF INDIA, OFF ASHRAM ROAD,
AHMEDABAD - 380 009. PHONE : +91 (079) 2658 8829 / 2480 / 4488
ENGINEERING + ARCHITECTURE FAX : +91 (079) 2658 3596 WWW.VMSCONSULTANTS.COM

SHEET SIZE	DRAWING NO.	CONSTRUCTION	REVISION:
1000 x600	SS.1.16	C	R0